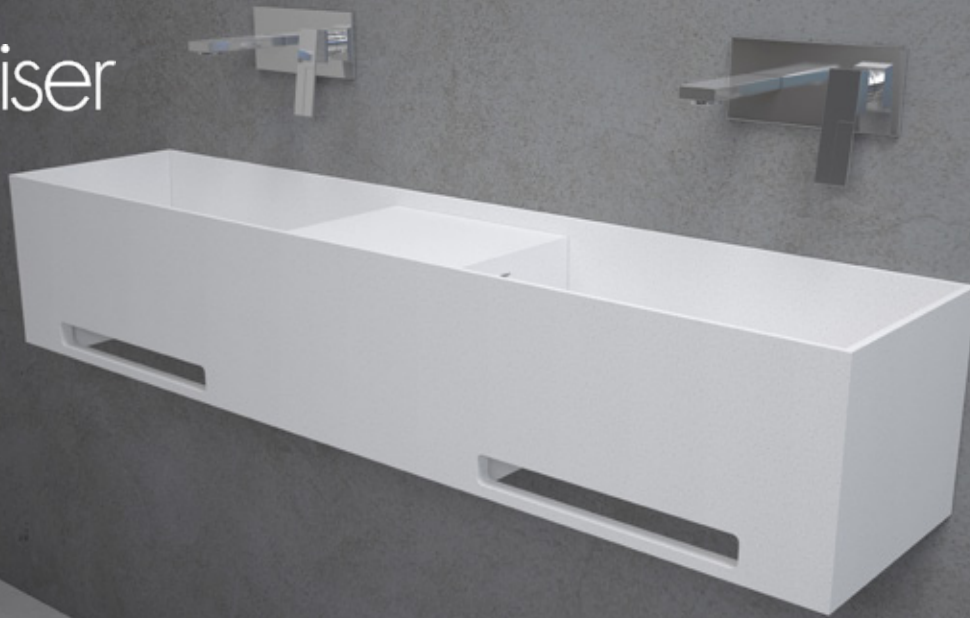


apaiser



GEOMETRICS

Soka double vanity 1800mm

Wall mounted to allow flexibility and functional ease, the Soka Vanity features a versatile tray, able to be configured either to left or right on the single basin option and proudly centred on the double basin variation. With a deliberately simple cut-out towel rail, the vanity adds the final touch of minimalism and functionality to adorn any bathroom.

DIMENSIONS

1800mm x 400mm x 350mm

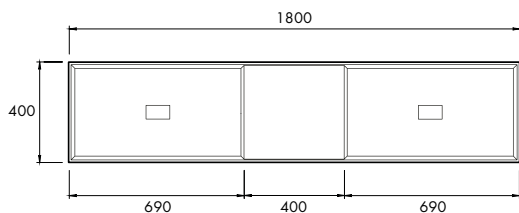
Approx weight: 115kg (253lb)

Overflow option available.



Product code 6277

Note: Brackets not included. Please check with your apaiser sales representative to confirm suitability for wall hanging this product.



apaiser MARBLE

apaiserMARBLE® is a luxurious, performative, non-porous marble material, derived from reclaimed marble, enriched with the purity of Australian minerals. Offering enhanced performance, achieved through the integration of the most advanced materials, apaiserMARBLE is shaped and perfected by our master craftsmen.

We at apaiser are committed to manufacturing bathware, which is respectful of the environment. In all phases of our process, we strive to produce a product with consistently low environmental impact.

apaiser CARE

A dedicated support platform comprising apaiser's in-house design and engineering professionals, provides superior service quality and peace of mind to all our project customers and retail installations. apaiserCARE® oversees design to delivery, installation and training.

